

Automatic slatted safety covers 

# MANU

## Safe, economical and motorised



Above Water Line



Slow Mode



Pool  $\leq 5 \times 10$



Uncovered



Mobile mechanism



Manual



Motor



Limit switches



Slatted covers  
with STANDARD  
NF P  
90-308  
compliant

  
**Abrible**  
*Protéger, Profiter !*

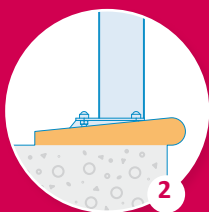
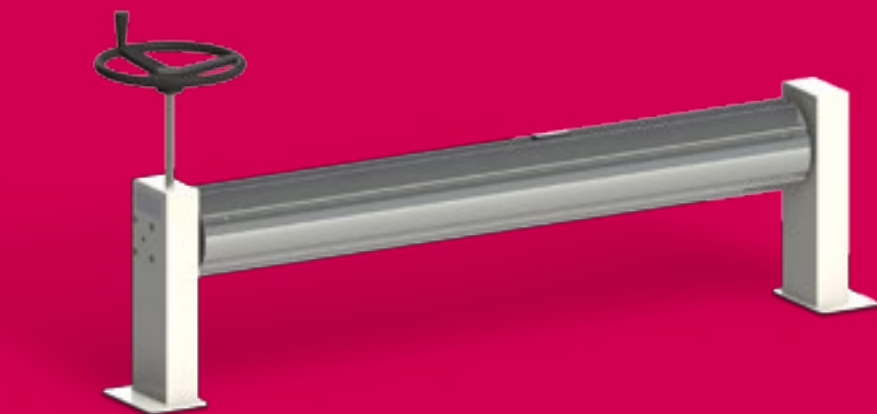
 MADE IN  
FRANCE

[www.abrible.com](http://www.abrible.com)

# MANU

Simply quality.

A solution combining safety and functionality that is easy on your pocket.



## Compliant

All Abridblue covers meet Swimming Pool Safety standard NF P90-308. European leader Abridblue has designed and installed over 97,000 cover solutions.

## An economical solution

Less evaporation. Improved heat balance for longer, more affordable pool use. Cleaner water.

## 1 Easy rolling and unrolling

Down-gear wheel operation to cover and uncover your pool effortlessly and easily. The wheel is detachable.

## 2 Fits perfectly on pool edges

Height-adjustable legs prevent friction on pool edges.

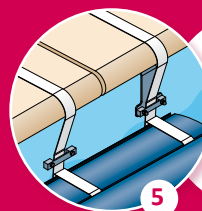
## Peace of mind

Once unrolled, safety is guaranteed.

## 3 Quality down to the very last detail

Impeccable finish for the profiled slat wings. Ultrasound welded<sup>(1)</sup> plugs provide watertightness and reliability.

OPTIONS  
AVAILABLE



## AVAILABLE OPTIONS

### 4 Optimal

Wings equipped with brushes limit the transfer of impurities into the pool and reduce the clearance between the brushes and the pool wall.

### 5 Manual locking mechanisms adapted to all needs:

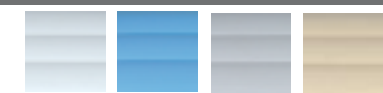
- Straps on the pool deck;
- Coverlock system;
- FEEX'O system.

Guarantee  
**3**  
years\*

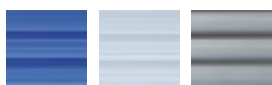
<sup>(1)</sup> For manufacturing reasons, some slat covers may be finished using the traditional bonding method.

\* For the slats, the mechanism and the motor. See general conditions of sale.

## COLOURS



PVC: White / Blue / Light Grey / Sable.



Polycarbonate: Blue-tinted translucent / Transparent / Black Fumée.



Stand colours: White / Sable / Light Grey

## OPTIONAL

- Anti-corrosion composite tube (up to 5 m).
- Stud fastening.
- Wings equipped with brushes.
- Locking mechanisms.
- Motorisation kit, upgrade to OPEN.
- Motorisation kit, upgrade to OPEN Solar Energy.

Pool dim.	From 2 x 2 m to 5 x 10 m
Mobile	Above the water line / Bare
Setting	Manual
Slats	Support a load of 100 Kg High UV resistance.



Recommended retailer